



WITS **FXMED**

SERVICE BROCHURE

We come to you...



Content

Introduction	1
A Message from Dr Kike	2
The Burden of Chronic Diseases	3
Our Solution	4
What's the Difference	5
Our Services	6
Contact Us	18



Introduction

FXMED provides healthcare with a unique functional medicine approach to administer care to various patients, particularly those with chronic diseases. This functional approach allows the identification of the root cause of a disease and directs treatment to dealing with the root cause.

FXMed uses telemedicine, functional medicine, home-based mobile care, and data-driven monitoring to deliver quality healthcare to clients. With the aid of our telemedicine facilities delivered via our mobile app, **WellnessWits**, we are bringing healthcare to you in a new, unique and refined manner.



The **doctor of the future** will give no medicine but will interest his patient in the care of the human frame, in diet and in the cause and prevention of disease.

-Thomas Edison



A Message from Dr Kike



Welcome

**GOOD MEDICINE IS A
"PATIENT-DOCTOR
PARTNERSHIP", NOT A
"DOCTOR-PATIENT
DICTATORSHIP."**

Are you feeling overwhelmed, losing energy or just hoping that things would be different with your health?

Or you feel like the 7-10 minutes you get to spend with your doctor does not begin to unpack the intricacies of your health concern, leaving you feeling unheard?

You are not alone!

I have felt that way many times during my personal journey to healing from Thyroid disease. Many conventional medicine treatments did not give me lasting solutions as I went from one pill to another for symptom relief.

As I walked this journey of a patient trapped in a vicious cycle of quick fixes with side effects and constant dependence on pharmaceutical drugs to feel better, I had to make a paradigm shift in my thinking of what good medicine is. My experience with this chronic illness has left a desire to bring a change in the way patients are being managed through the application of personalized integrative medicine and health coaching, using simple dietary and lifestyle modifications for symptomatic relief.

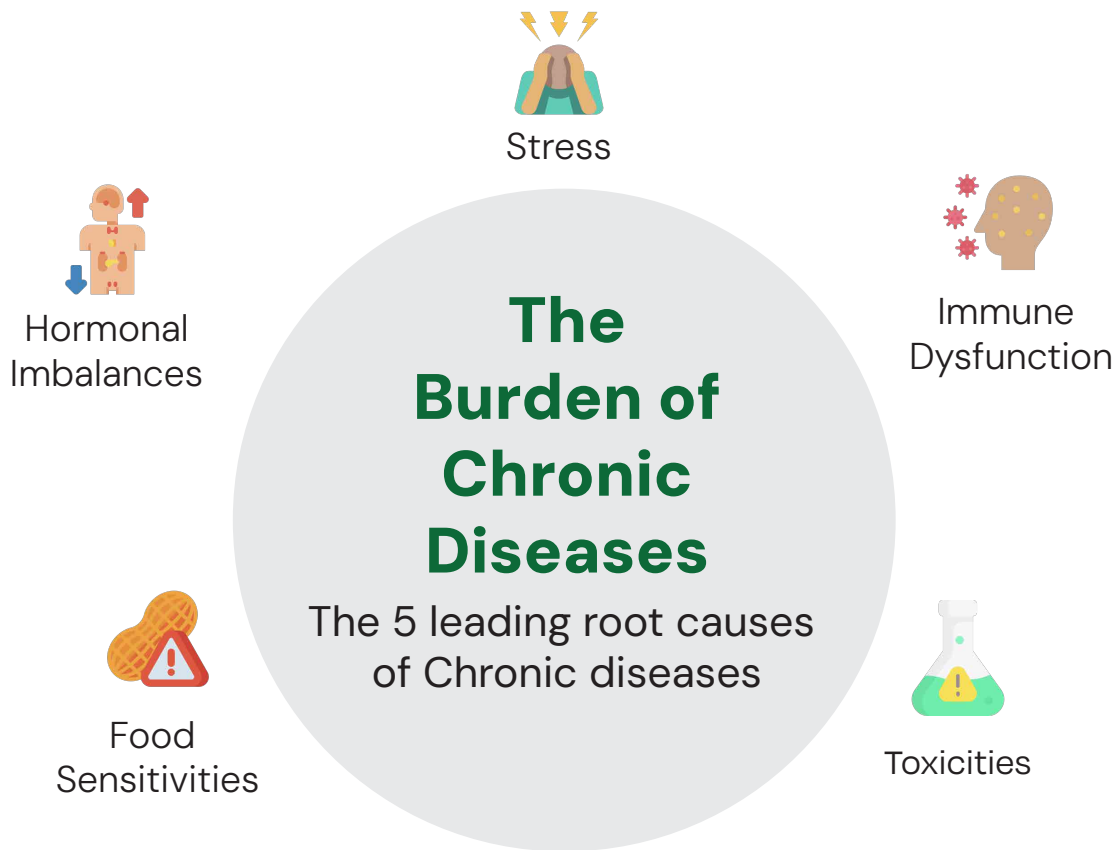
This is why I created WITS Functional Medicine which we will be delivering via FX Med. I encourage you to explore the possibilities of disease free, pain-free and medication-free lifestyle through our programs. Our commitment to you is to bring you the best in health and wellness!

Sincerely,

Dr Kike Oduba, MBBS, MPH, CIC

Founder, WITS Functional Medicine





3 in 5
deaths are due to
preventable chronic diseases

80%
of heart disease, stroke and type 2 diabetes
are preventable through diet and a healthy lifestyle

40%
of cancer deaths are
preventable through diet
and a healthy lifestyle



Our Solution

Concierge Care offered by Functional Medicine & Digital Health

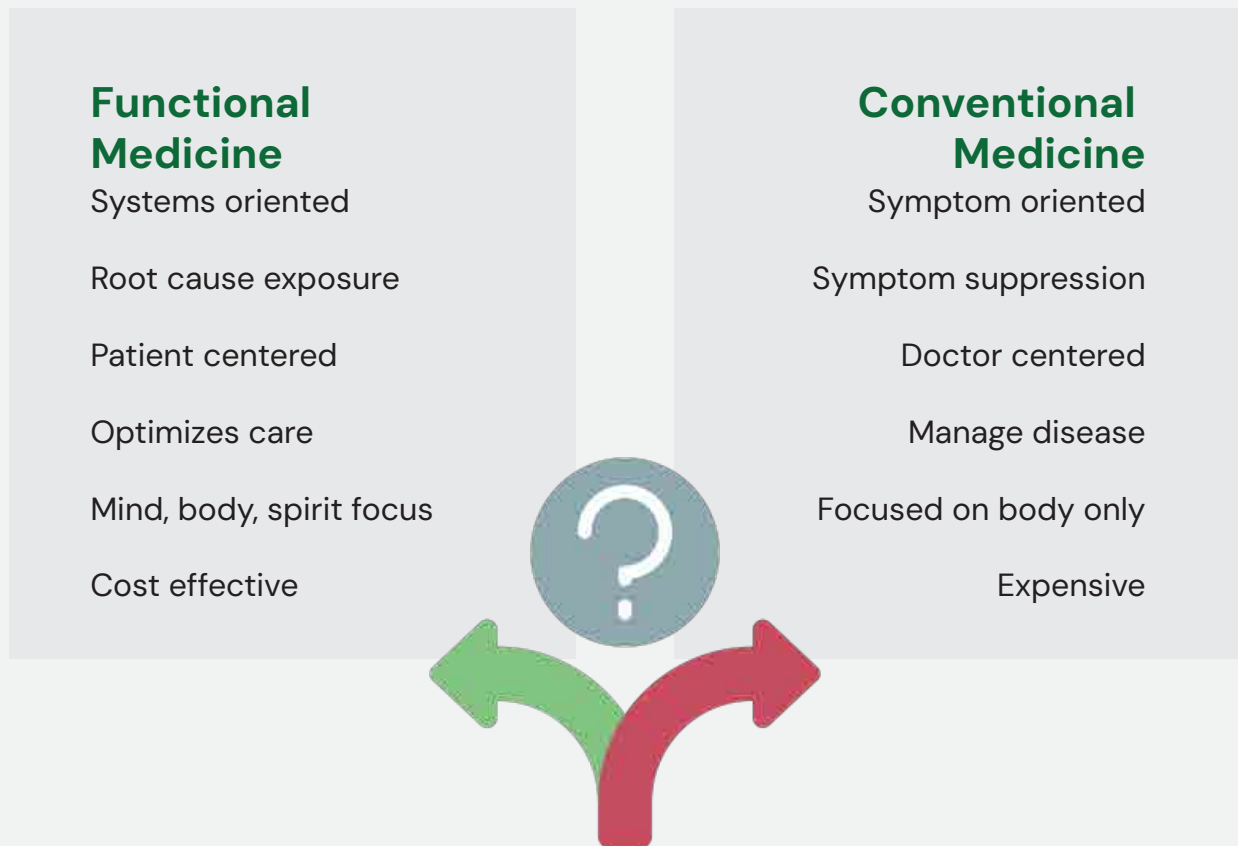
Functional medicine is a proactive practice of tackling the underlying causes of disease, using a systemic approach. It shifts the focus from the symptoms of disease to the whole person. As no two people are exactly the same, the ultimate goal is to provide personalized care and lifestyle interventions to reverse or slow down pathological processes leading to chronic disease which can happen from the comfort of your home.

The functional medicine matrix was expertly designed to help people identify multi-systemic dysfunctions in the body and the interconnections of environmental, cultural, emotional and genetic factors in the expression of diseases in the body. Our Approach We use an integrative approach to assess each person as a whole; combining in-depth health history and advanced bio-marker testing to gather pertinent pieces of information that help us connect the dots leading to the root causes of disease with cutting-edge technology which eliminate long waiting hours in the hospital.



What's the difference

Functional medicine differs from mainstream conventional practice of medicine by taking into consideration the various aspects of your mind, body, and spirit. We work in collaboration with your medical care team to find the most suitable solution tailored to you and your health needs.



FXMED provides a framework that easily applies all aspects of medical science with diet and lifestyle interventions in a well-controlled and effective manner that allows clinicians track changes and identify functional imbalances at the cellular level. We are a team of medical providers with a vast range of expertise as nutritionists, health coaches, physicians, and pharmacists. Our goal is to give you the best shot at achieving sound health and wholeness in the most safe and natural way possible with little to no side effects.



Our Services

We offer a diverse range of services tailored to meet your unique needs — all thoughtfully structured to fit within your budget.

Choose from flexible subscription-based plans or opt for à la carte services, giving you the freedom to access exactly what you need, when you need it.

Specialist Consultation

We connect patients to a network of certified medical specialists across various fields, including cardiology, endocrinology, dermatology, neurology, orthopedics, and more. Appointment scheduling is seamless, and consultations can take place in person or virtually. This service ensures accurate diagnosis, expert clinical opinions, and advanced care pathways for complex or chronic conditions.

Virtual Consult

Our virtual consultation service allows patients to access medical professionals from anywhere. Through secure video or chat consultations, you can receive expert medical advice, follow-up care, prescription refills, and wellness guidance. This service is ideal for busy individuals, remote patients, or anyone seeking convenient, accessible healthcare without compromising quality.

Nutrition Counselling

Our nutrition specialists provide evidence-based dietary guidance tailored to individual health needs, medical conditions, and lifestyle goals. Whether for weight management, chronic disease prevention, sports performance, or overall wellness, we design personalized nutrition plans. Counselling includes ongoing monitoring, progress evaluation, and practical meal recommendations to help you make sustainable dietary changes.

Concierge Medicine

Our concierge medicine service offers patients personalized, on-demand medical care tailored to their schedule and lifestyle. Clients receive priority access to a dedicated physician, extended consultations, home or workplace visits, and continuous care coordination. This model ensures faster response times, reduced waiting, and comprehensive support for chronic and preventive health needs. It is ideal for executives, families, and individuals seeking premium, relationship-driven medical care.

Supplement Dispensary

FX Med operates a trusted dispensary providing high-quality supplements and prescription medications. Our inventory is carefully curated to meet clinical standards, ensure safety, and support your wellness goals. Patients benefit from expert guidance on proper usage, interactions, and personalized supplement plans. Whether you need vitamins, nutraceuticals, or routine medications, our dispensary offers convenient, reliable access.

Medical Outreach

FX Med provides structured community medical outreach programs designed to bring quality healthcare directly to underserved populations. Our team of physicians, nurses, and allied health professionals deliver on-site consultations, screenings, preventive care, and health education. Each outreach is tailored to the needs of the community, ensuring early detection of diseases, accessible treatment options, and long-term engagement in healthier living. Organizations and partners can collaborate with us to sponsor or personalize outreach events.

Lab Investigations

FX Med provides comprehensive diagnostic laboratory services ranging from routine blood work to advanced panels. Through our accredited lab partners, patients enjoy fast sample collection, accurate results, and clear interpretation by qualified physicians. We support preventive screening, chronic disease monitoring, and diagnostic evaluations, enabling timely clinical decisions.



WITS FXMED





FOR INDIVIDUALS

www.fxmed.ng



VIP Concierge Medicine Packages

House-Calls, Diagnostics, Aesthetics & IV Therapy

Each package is designed to offer a blend of convenience and comprehensive care, ensuring that you and your family receive the best in health and wellness services. Our dedicated team of professionals is committed to providing tailored solutions that cater to your unique needs, whether it's staying on top of your health with regular check-ins or indulging in rejuvenating treatments. Choose the package that best suits your lifestyle and let us take care of the rest.

FXMED Standard

₦65,000 monthly

- Concierge Check-In
- Quarterly house-call/Visit
- Two tele-consults per month
- Open-slot booking

FXMED Gold

₦450,000 monthly

- Basic Labs: Complete
- Complete Metabolic Panel (Complete Blood Count, Lipid Panel, Kidney Function Test, Liver Function Test), HBA1c, Urinalysis
- Drug refills: Basic primary care (prescribed by FXMed physician)
- Monthly house-call: Vitals & physical exam
- 1 massage session or premium facial treatment
- 1 IV therapy Infusion
- Priority booking
- 10% off add-ons
- Premium care plan which includes up to 3 family members

FXMED Platinum

₦700,000 monthly

- Basic Labs + ECG and ultrasound
- Drug refills: Basic and Advanced Speciality Care (prescribed by FXMed physician)
- 2 massage sessions or premium facial treatment
- 2 IV drip therapy
- 15% off add-ons
- Priority access to specialists
- Premium care plan
- Care plan includes up to 5 family members
- Up to 4 monthly tele-consults



Subscription Service

	Standard	Gold	Platinum
Price	₦65,000	₦450,000	₦700,000
Tele-Consults	2 Consults	4 consults	6 consults
House-Call: Vitals + Physical	Quarterly	Monthly	Monthly
Booking Access	Open-slot booking	Priority booking	Priority booking
Family Care Plan	×	Up to 3 family members	Up to 5 family members
Diagnostic Labs	×	Basic Labs	Comprehensive Labs
Drug Refills	×	Basic	Advanced
Supplements Dispensary	×	Basic	Advanced
Monthly Massage/Facial	×	1 session	2 sessions
IV Therapy Infusion	×	1 session	2 sessions
Wellness Retreat Access	×	Annual pass	Bi-annual pass
Add-Ons Discount	×	10% off	15% off
Exclusive Fitness Plans	×	Quarterly	Monthly
Early Access to New Programs	×	✓	✓
Priority Access to Specialists	×	×	✓
Personalized Wellness Plan	×	×	✓
Advanced Genetic Testing	×	×	✓
Personal Health Coach	×	×	✓



FXMED *Elite*



Pregnancy Wellness Packages

House-Calls, Diagnostics, & Pregnancy Care

Our Pregnancy Wellness Package delivers continuous, personalized support across the full maternal journey—pre-conception, pregnancy, and postnatal care. Designed to simplify care and provide peace of mind, the service combines expert guidance, proactive health support, and coordinated care tailored to each individual.

Pre-Conception Health Package

₦295,000 (3 Months)

- **Initial Consultation**
GP Home Visit
- **Essential Health Analysis**
Full Blood Count
Liver Function Test (AST/ALT)
Kidney Function Test
Fasting Blood Sugar (FBS) + HbA1C
Lipid Profile
Urinalysis
HIV screen
Hepatitis B Screen
Blood Group
Genotype
- **Nutrition and Lifestyle Guidance**
Nutrition Assessment
4-Week Meal Plan and Recipes
- **Wellness and Relaxation**
Aromatherapy Massage

Ante-Natal Wellness Package

₦740,000 (Per Trimester)

- **Regular Health Monitoring**
Monthly Home Visit
24/7 Care support team access
Urgent care support
- **Labor and Delivery**
Hospital transportation
Labor room Concierge support
- **Labs and Diagnostics**
All tests from the Essential Health Analysis
Thyroid Function Test (Free T3, Free T4, TSH)
Ultrasound Scan
- **Nutrition and Lifestyle Support**
Body Composition and Fitness Assessment
Dietetic Consultation
Prenatal Vitamins (Monthly supply)
- **IV Therapy for Vitality**
Aqua Boost
- **Relaxing Treatments**
Shiatsu Foot Massage



Pregnancy Wellness Packages

Post-Natal Wellness Package

₦395,000

- **Postpartum Health Assessment**

GP Home Visit
Postpartum depression and
Mental Health Screening
Newborn Health Assessment

- **Postnatal Nutrition and Recovery**

Lactation Support
Nutrition Assessment
Pantry Overhaul and
Makeover

- **Body and Skin Rejuvenation**

Deep-Cleansing Facial
Microdermabrasion

- **IV Therapy for Recovery**

Vitality Shots: Vitamin C, Zinc

- **Relaxation and Stress Relief**

Therapeutic/Deep-tissue
Massage (60 mins)



Fertility Breakthrough Program

Concierge House–Calls & Diagnostics

These packages are designed to support women through all stages of pregnancy, ensuring comprehensive care and well-being.

₦3,500,000/\$2,450 (3 Months)

■ Comprehensive Initial Consultation

- GP Home Visit
- Fertility Specialist Teleconsultation (UK and US)

■ Advanced Health and Fertility Analysis

- Full Blood Count
- Hormonal Profile (FSH, LH, Estrogen, Progesterone)
- Liver and Kidney Function Tests
- Fasting Blood Sugar (FBS) + HbA1C
- Lipid Profile
- Thyroid Function Test (Free T3, Free T4, TSH)
- Semen Analysis (for partners)
- Urinalysis

■ Personalized Nutrition and Lifestyle Plan

- Comprehensive Nutrition Assessment
- 6-Week Meal Plan with Fertility-Boosting Recipes
- Personalized Exercise Plan

■ Mind-Body Wellness and Relaxation

- Monthly Aromatherapy Massage
- Guided Meditation Sessions (Digital Access)
- Hormone Reset Fertility Classes

■ Innovative Fertility Support

- Red Light Sessions (2 per month)
- Herbal Supplement Starter Kit

■ Exclusive Online Resources and Community

- Access to Fertility Workshops and Webinars
- Membership to a Supportive Online Community Forum





FOR NGOS, COMMUNITY OUTREACHES, CSR

www.fxmed.ng



NGO & Community Outreach Pricing (Minimum 50 Participants)

Community Day Package

₦7,000 / person (Rotating vitals + brief consult)

Lab bundle add-on

₦15,000 / person (Rapid tests–Blood Glucose, CBC)

Corporate social responsibility (CSR) partners may sponsor 20–50% subsidy for vulnerable groups

Community Clinic Day (Group Model)

₦10,000 / person (6–12 people/slot)

Group health talk (10 min): BP, diet, activity

Rotating vitals + physical + brief consult

Group coaching/Q&A; (10–15 min)

Coaching Options (Virtual)

Individual coaching (20 min)

₦10,000 / session

Individual coaching (40 min)

₦18,000 / session

Group coaching (6–12 pax, 60 min)

₦65,000 / session

Group coaching (6–12 pax, 30 min)

₦45,000 / session

4-week group program (weekly, 30 min)

₦12,000 / person/week

Specialty Clinics

Cardio Health Check – ECG review, BP optimization, lifestyle Rx

Metabolic/Diabetes Health Check – HbA1c or FBS + foot exam + plan

Respiratory/Asthma Check – Peak flow, trigger plan, inhaler technique

Mental Health Check – PHQ-2/9 or GAD-2/7 brief screen + referral pathways

MSK/Ergonomics – neck/back/shoulder screen + desk ergonomics coaching

Derm QuickCare – rash/acne consult, benign lesion triage; facial treatments if pre-scheduled

Women's Health Lite – cycle & anemia risk screen, breast self-exam coaching; (Pap/HPV requires pre-consent/time slots)

Men's Health Lite – LUTS/PSA counseling (PSA test if included), BP & waist metrics

Immune Optimization – Nutrition evaluation, URTI (Flu, COVID, Strep throat) screening, Vitamin dispensary

Vaccination clinic set-up – Flu, Hep B, tetanus, etc (base + cost per dose)

Antenatal Mini-Suite – Nutrition evaluation, Labor and delivery optimisation, Ultrasound scans

Add-on pricing:

₦40,000 per person per specialty mini clinic (depends on modality/test).





FOR EMPLOYERS

www.fxmed.ng



Cooperate On-Site Speciality Clinics

Affordable Physical Exams, Vitals, Physician Consults & Coaching

Service Areas: Lagos (Ikeja, Maryland, Victoria Island, Lekki, Ajah)

Starter Plan

Covers on-site clinic, a 3-Month care plan, physician consultation, admin, equipment set-up, consumables, logistics

- Vitals (BP,HR, temp, SpO, BMI)
- Focused physical exam (7–10 min)
- Brief nurse or health coach consult (5–7 min)
- Comprehensive care plan & next steps

Pricing

Base Site Fee ₦320,000 + per person rate

Number of People	Per Person Rate	Total (Base + Participants)
10–19 people	₦18,000	₦320,000 + (10 × ₦18,000) = ₦500,000
20–39 people	₦15,000	₦320,000 + (20 × ₦15,000) = ₦620,000
40–59 people	₦12,000	₦320,000 + (40 × ₦12,000) = ₦800,000
60+ people	₦10,000	₦320,000 + (60 × ₦10,000) = ₦920,000

Optional Add-Ons

Basic lab bundle (CBC, Lipid Profile, Kidney Function Test) **₦50,000/person**

Massage station (back or foot) **₦5,000 / person**

Group health coaching

30 minutes **₦45,000**

60 minutes **₦65,000**

Terms & Logistics

Throughput target: 10–15 participants/hour per team

For >60 people, a second team may be added (+₦90,000 base)

Travel surcharges may apply outside central zones

Data privacy: Individual results confidential; employer receives de-identified aggregate insights



Executive On-Site Clinics

Concierge Health & Wellness Pop-Ups — Corporate

All packages include site set-up, triage, vitals, doctor consults, consent forms, and a secure digital report to HR (aggregate only) within 72 hours. Prices assume Lagos/Abuja metro, 4-hour block, 30–60 staff. Travel/after-hours surcharges may apply.

Executive Core (Basic Health)

**₦60,000/person +
₦350,000 base fee**

Best for routine screening + same-day primary care.

Includes:

- Vitals and risk screening (BP, BMI, lifestyle)
 - GP consult,
 - BMP (CBC + Lipid Panel + Kidney Function Test)
 - Brief counselling,
 - Return-to-work notes as needed
 - Personalised care plan
- Staffing: 1 GP, 1 RN, 1 Phlebotomist, 1
- Concierge Specialist (intake).
- Throughput: ~10–15 people/hour (with 3 observation chairs, 1 exam table).

Executive Plus (Cardio +Metabolic)

**₦84,000/person +
₦350,000 base fee**

Best for members with hypertension, diabetes, and sedentary risk.

Includes:

- **Executive Core (Basic Health Day)**
- Resting ECG,
- Fasting blood sugar
- Staffing: 1 GP, 1 RN, 1 Phleb, 1 ECG tech (or cross-trained), 1 Admin.
- Throughput: ~8–12 staff/hour (ECG adds ~6–8 min/person).

Executive Complete

**₦135,000/person +
₦350,000 base fee**

Best for leadership teams or health-intensive pop-ups.

Includes:

- **Executive Plus (Cardio + Metabolic)**
- Choose one of PSA (men 45+) or elvic
- Ultrasound (women).
- Staffing: 1 GP, 1 PA/NP or 2nd GP, 1 RN, 1 Phleb, 1 ECG tech, 1 Admin.
- Throughput: ~6–10 staff/hour



Reach out to Us



+234 911 3271 148

+234 907 7031 311



fxmed@wellnesswits.com



www.fxmed.ng

